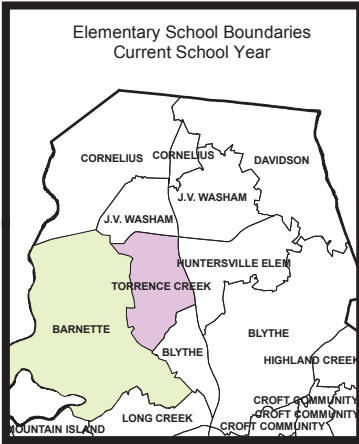
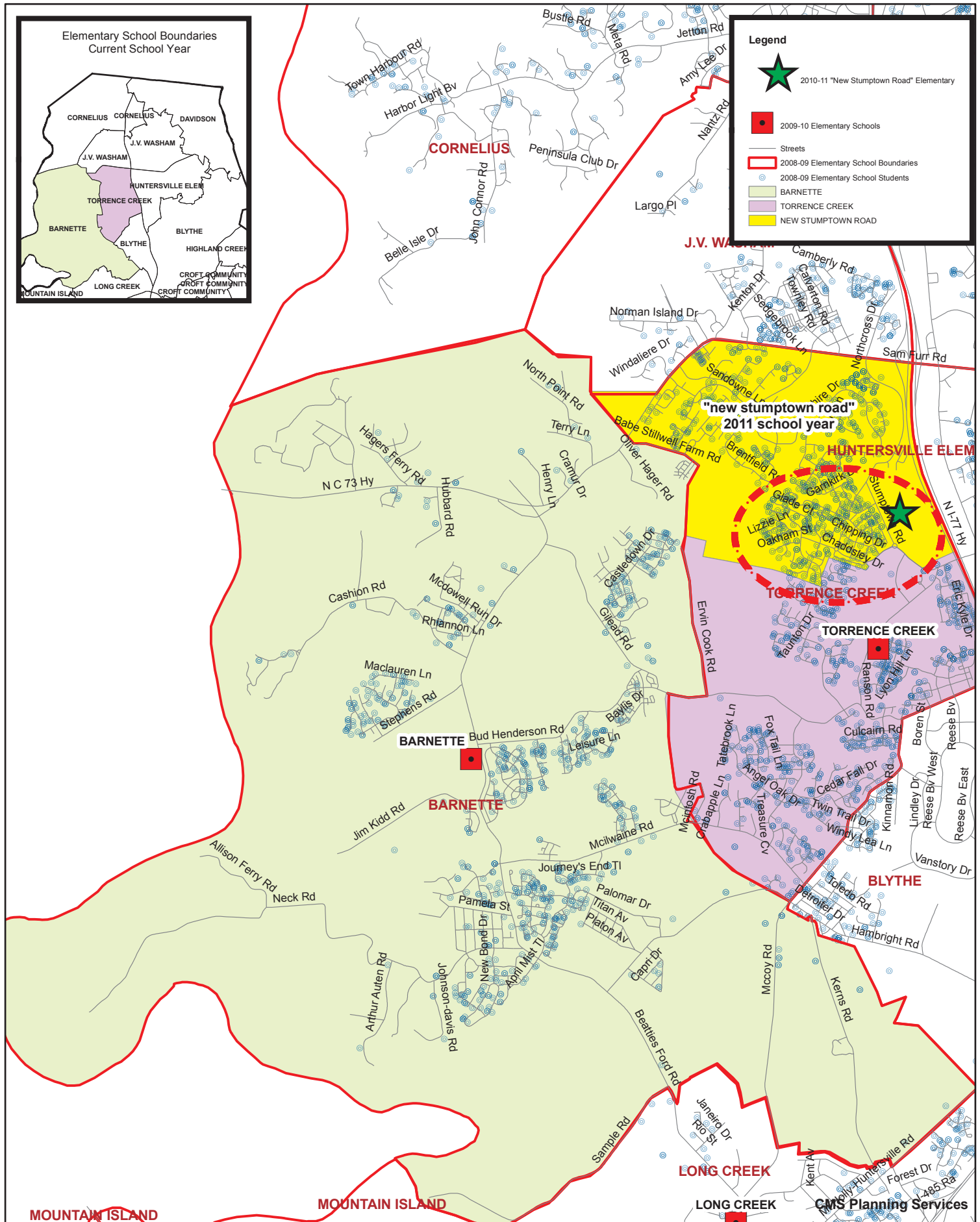


BOARD ADOPTED: 2009-10 School Year Barnette Elementary Boundary Modification and "New stumptown road" Elementary



Legend

- 2010-11 "New Stumptown Road" Elementary
- 2009-10 Elementary Schools
- Streets
- 2008-09 Elementary School Boundaries
- 2008-09 Elementary School Students
- BARNETTE
- TORRENCE CREEK
- NEW STUMPTOWN ROAD



Board Adopted:2009-10 2009 Barnette elementary modification and 2011 "new stumptown road" elementary school

2008-09 School Year

Elementary Schools	2008-09 ADM 20th Day	Building Classroom Capacity	Building Utilization (without mobiles)	Number of Mobiles	White	African American	Latino	Asian	Native American	Multi Racial	Free or Reduced Price Lunch
Barnette elementary	556	834	67%	0	67%	18%	8%	2%	0%	5%	13%
Torrence Creek elementary	1322	784	169%	32	78%	7%	5%	5%	0%	6%	11%

*Enrollment includes transfer and choiced-in students as of 20th day 2008-09

*ADM= Average Daily Membership

Future Growth - CMS Students (non magnet) Within Boundary After Proposed 2011-12 School Boundaries

Elementary Schools	2008-09			2009-10				2010-11				2011-12			
	Number of Students in the Proposed School Boundary as of 20th Day 2008-09	Building Classroom Capacity	Building Utilization (without mobiles)	Number of Students from Growth	Total Students with Growth	Building Classroom Capacity	Building Utilization (without mobiles)	Number of Students from Growth	Total Students with Growth	Building Classroom Capacity	Building Utilization (without mobiles)	Number of Students from Growth	Total Students with Growth	Building Classroom Capacity	Building Utilization (without mobiles)
Barnette elementary 2009-10	686	834	82%	54	740	834	89%	54	794	834	95%	54	848	834	102%
Torrence Creek elementary	1221	784	156%	34	1255	784	160%	34	1289	784	164%	9	705	784	90%
"New stumptown road" 2011-12	579	830	70%	28	607	830	73%	28	634	830	76%	28	662	830	80%

*Number of students in the proposed boundary options do not include transfer or choiced-in students.

Torrence Creek and Barnette elementary have a boundary modification in 2009-10. Torrence Creek elementary has an additional boundary change in 2011-12 due to the opening of "new stumptown road."

Elementary Schools	Demographic /Student data as of 20th day 2008-09							
	Number of Students in the Proposed 2009-10 School Boundary as of 20th Day 2008-09	White	African American	Latino	Asian	Native American	Multi Racial	Free or Reduced Price Lunch
Barnette elementary 2009-10	686	66%	17%	8%	3%	0%	6%	15%
Torrence Creek elementary 2011-12	690	77%	9%	6%	3%	0%	5%	13%
"New stumptown road" 2011-12	579	84%	4%	4%	4%	0%	4%	8%

*Demographic data is based on students in the proposed boundary options and does not include transfer or choiced-in students.