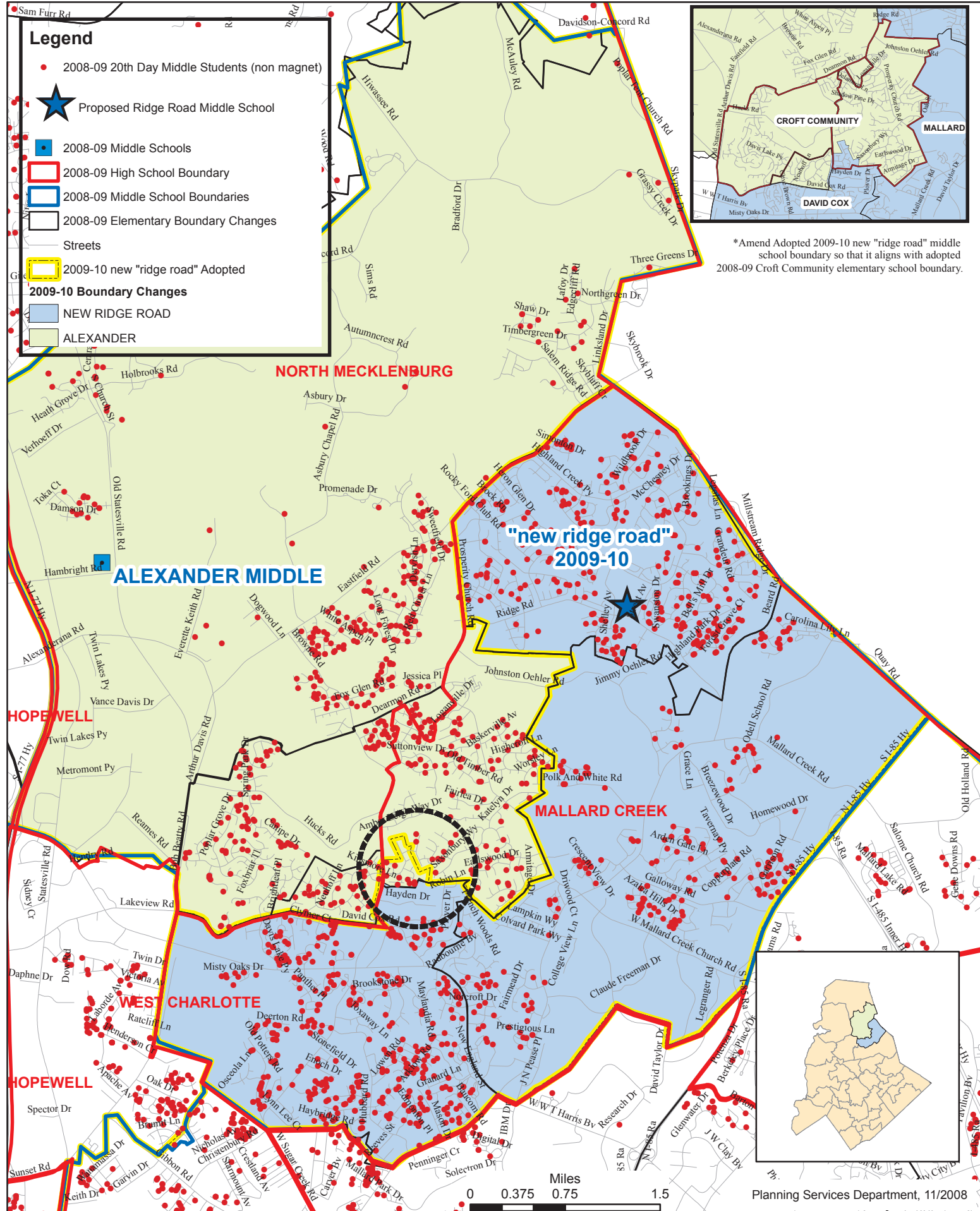
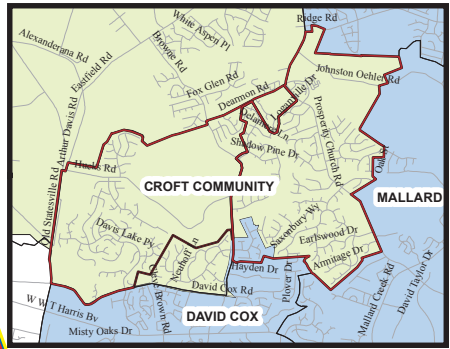


Board Adopted: "new ridge road" Middle School 2009-10 School Year



Legend

- 2008-09 20th Day Middle Students (non magnet)
- ★ Proposed Ridge Road Middle School
- 2008-09 Middle Schools
- 2008-09 High School Boundary
- 2008-09 Middle School Boundaries
- 2008-09 Elementary Boundary Changes
- Streets
- 2009-10 new "ridge road" Adopted
- 2009-10 Boundary Changes**
- NEW RIDGE ROAD
- ALEXANDER



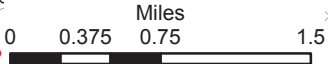
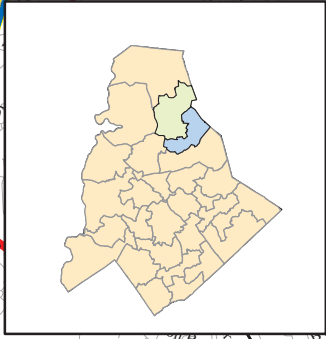
* Amend Adopted 2009-10 new "ridge road" middle school boundary so that it aligns with adopted 2008-09 Croft Community elementary school boundary.

**"new ridge road"
2009-10**

ALEXANDER MIDDLE

MALLARD CREEK

WEST CHARLOTTE



Board Adopted:
"new ridge road" Middle School
2009-10 School Year

CMS Enrollment 2008-09

Middle Schools	2008-09 ADM 20th Day	Building Classroom Capacity	Building Utilization (without mobiles)	Number of Mobiles	Number of EC Classes	White	African American	Latino	Asian	Native American	Multi Racial	Free or Reduced Price Lunch
Alexander Middle	1407	823	171%	38	0	28%	54%	10%	4%	0%	5%	41%

*Enrollment includes transfer and choiced-in students as of 20th day 2007-08

*ADM= Average Daily Membership

Future Growth - CMS Students (non ec, non magnet) Within Boundary After Proposed 2009-10 Elementary School Boundaries

Middle Schools	2008-09			2009-10			
	Number of Students in the Proposed 2009-10 School Boundary as of 2008-09	Building Classroom Capacity	Building Utilization (without mobiles)	Number of Students from Growth (2009-10 SY)	Total Students with Growth	Building Classroom Capacity	Building Utilization (without mobiles)
Alexander Middle	587	823	71%	0	587	823	71%
New Ridge Road Middle	885	823	108%	0	885	823	108%

*Assumption: the rate of growth will remain constant from 2008-09 to 2009-10.

*Number of students in the proposed boundary options do not include transfer or choiced-in students.

*Demographic data is based on students in the proposed boundary options and does not include transfer or choiced-in students.

Demographic /Student data as of 20th day 2008-09								
Middle Schools	Number of Students in the Proposed 2009-10 School Boundary as of 20th day 2008-09	White	African American	Hispanic	Asian	Native American	Multi Racial	Free or Reduced Price Lunch
Alexander Middle	587	34%	48%	9%	4%	0%	5%	42%
New Ridge Road Middle	885	24%	56%	10%	5%	0%	5%	40%