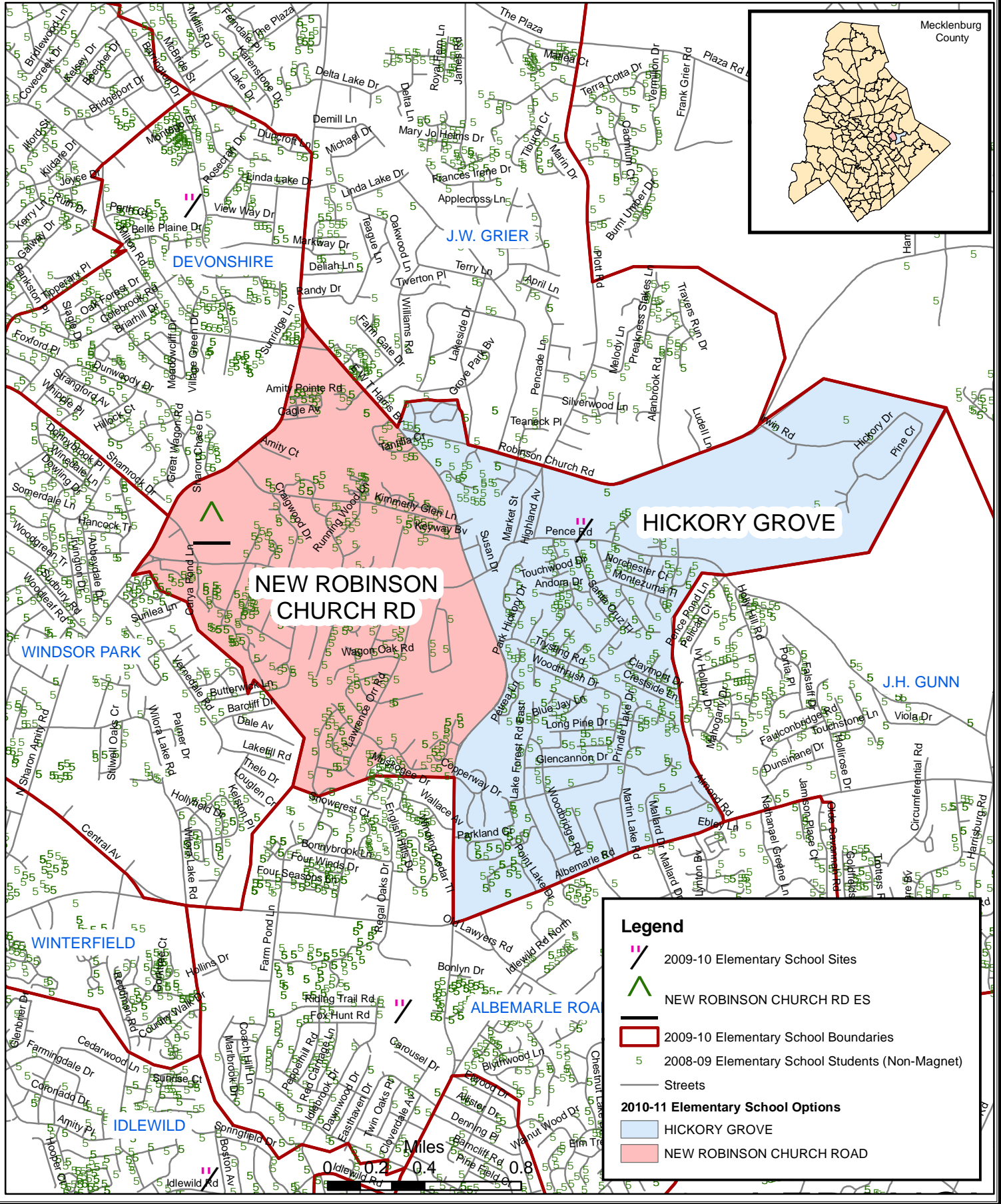


Discussion Option 1: 2010-11 School Year "NEW ROBINSON CHURCH RD ELEMENTARY"



DISCUSSION OPTION 1 : "new robinson church rd." elementary school
2010-11 School Year

CMS Enrollment, 2008-09

Elementary Schools	2008/09 ADM 20th Day	Building Classroom Capacity	Building Utilization without mobiles	Number of Mobiles	White	African American	Hispanic	Asian	Native American	Multi Racial	Free or Reduced Price Lunch
Hickory Grove	923	582	159%	12	4%	56%	35%	2%	0%	3%	80%

*enrollment includes transfer and choiced-in students as of 20th day 2008-09

ADM= Average Daily Membership

* Percents are rounded to the nearest whole number

Future Growth- CMS Students (non magnet) Within Boundary After Proposed "new robinson church rd." boundary option

Elementary Schools	2008-09			2009-10				2010-11			
	Number of Students residing in the Proposed 2010-11 School Boundary as of 20th day 2008-09	Building Classroom Capacity	Building Utilization (without Mobiles)	Number of Students from Growth (2009-10 SY)	Total Students with Growth	Building Classroom Capacity	Building Utilization (without Mobiles)	Number of Students from Growth (2010-11 SY)	Total Students with Growth	Building Classroom Capacity	Building Utilization (without Mobiles)
"new robinson church rd"	487	600	81%	11	498	600	83%	11	509	600	85%
Hickory Grove	484	582	83%	10	494	582	85%	10	504	582	87%

*Assumption: the rate of growth will remain constant from 2008-09 to 2010-11

*Number of Students in the proposed boundaries do not include transfer or choiced-in students

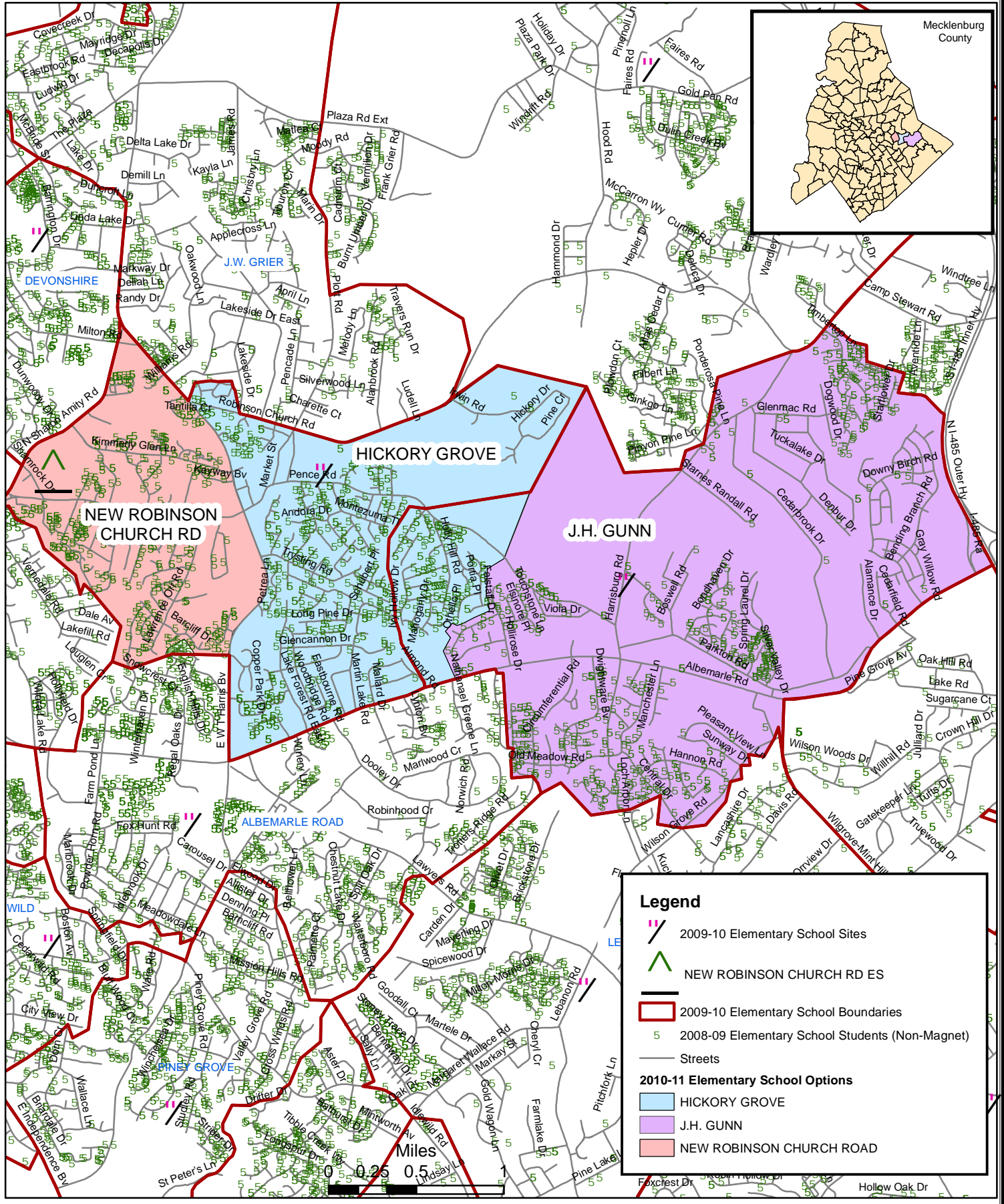
2010-11 Demographic/student data as of 20th day 2008-09

CMS Students (non magnet) Within Boundary After Proposed "new robinson church rd."boundary option

Elementary Schools	Number of Students residing in the Proposed 2010-11 School Boundary as of 20th day 2008-09	White	African American	Hispanic	Asian	Native American	Multi Racial	Free or Reduced Price Lunch
"new robinson church rd"	487	2%	54%	39%	1%	0%	3%	83%
Hickory Grove	484	8%	53%	32%	3%	0%	4%	77%

*Demographic data is based on students residing in the proposed boundary options and does not include transfer or choiced-in students

Discussion Option 2: 2010-11 School Year "NEW ROBINSON CHURCH RD ELEMENTARY"



**DISCUSSION OPTION 2 : "new robinson church rd." elementary school
2010-11 School Year**

CMS Enrollment, 2008-09

Elementary Schools	2008/09 ADM 20th Day	Building Classroom Capacity	Building Utilization without mobiles	Number of Mobiles	White	African American	Hispanic	Asian	Native American	Multi Racial	Free or Reduced Price Lunch
Hickory Grove	923	582	159%	5	4%	56%	35%	2%	0%	3%	80%
J.H. Gunn	766	590	130%	12	12%	45%	32%	2%	0%	8%	72%

*enrollment includes transfer and choiced-in students as of 20th day 2008-09

ADM= Average Daily Membership

* Percents are rounded to the nearest whole number

Future Growth- CMS Students (non magnet) Within Boundary After Proposed "new robinson church rd." boundary option

Elementary Schools	2008-09			2009-10				2010-11			
	Number of Students residing in the Proposed 2010-11 School Boundary as of 20th day 2008-09	Building Classroom Capacity	Building Utilization (without Mobiles)	Number of Students from Growth (2009-10 SY)	Total Students with Growth	Building Classroom Capacity	Building Utilization (without Mobiles)	Number of Students from Growth (2010-11 SY)	Total Students with Growth	Building Classroom Capacity	Building Utilization (without Mobiles)
"new robinson church rd"	487	600	81%	11	498	600	83%	11	509	600	85%
Hickory Grove	633	582	109%	19	652	582	112%	19	671	582	115%
J.H. Gunn	605	590	103%	50	655	590	111%	50	705	590	119%

*Assumption: the rate of growth will remain constant from 2008-09 to 2010-11

*Number of Students in the proposed boundaries do not include transfer or choiced-in students

2010-11 Demographic/student data as of 20th day 2008-09

CMS Students (non magnet) Within Boundary After Proposed "new robinson church rd."boundary option

Elementary Schools	Number of Students residing in the Proposed 2010-11 School Boundary as of 20th day 2008-09	White	African American	Hispanic	Asian	Native American	Multi Racial	Free or Reduced Price Lunch
"new robinson church rd"	487	2%	54%	39%	1%	0%	3%	83%
Hickory Grove	633	8%	55%	30%	2%	0%	4%	76%
J.H. Gunn	605	19%	39%	31%	3%	1%	8%	71%

*Demographic data is based on students residing in the proposed boundary options and does not include transfer or choiced-in students

DISCUSSION OPTION 3 : "new robinson church rd." elementary school
2010-11 School Year

CMS Enrollment, 2008-09

Elementary Schools	2008/09 ADM 20th Day	Building Classroom Capacity	Building Utilization without mobiles	Number of Mobiles	White	African American	Hispanic	Asian	Native American	Multi Racial	Free or Reduced Price Lunch
Hickory Grove	923	582	159%	12	4%	56%	35%	2%	0%	3%	80%
Windsor Park	741	580	128%	0	5%	36%	47%	9%	0%	3%	84%

*enrollment includes transfer and choiced-in students as of 20th day 2008-09

ADM= Average Daily Membership

* Percents are rounded to the nearest whole number

Future Growth- CMS Students (non magnet) Within Boundary After Proposed "new robinson church rd." boundary option

Elementary Schools	2008-09			2009-10				2010-11			
	Number of Students residing in the Proposed 2010-11 School Boundary as of 20th day 2008-09	Building Classroom Capacity	Building Utilization (without Mobiles)	Number of Students from Growth (2009-10 SY)	Total Students with Growth	Building Classroom Capacity	Building Utilization (without Mobiles)	Number of Students from Growth (2010-11 SY)	Total Students with Growth	Building Classroom Capacity	Building Utilization (without Mobiles)
"new robinson church rd"	554	600	92%	15	569	600	95%	15	584	600	97%
Hickory Grove	484	582	83%	10	494	582	85%	10	504	582	87%
Windsor Park	723	580	125%	50	773	580	133%	50	823	580	142%

*Assumption: the rate of growth will remain constant from 2008-09 to 2010-11

*Number of Students in the proposed boundaries do not include transfer or choiced-in students

2010-11 Demographic/student data as of 20th day 2008-09

CMS Students (non magnet) Within Boundary After Proposed "new robinson church rd."boundary option

Elementary Schools	Number of Students residing in the Proposed 2010-11 School Boundary as of 20th day 2008-09	White	African American	Hispanic	Asian	Native American	Multi Racial	Free or Reduced Price Lunch
"new robinson church rd"	554	3%	50%	42%	2%	0%	3%	83%
Hickory Grove	484	8%	53%	32%	3%	0%	4%	77%
Windsor Park	723	7%	36%	47%	8%	0%	2%	86%

*Demographic data is based on students residing in the proposed boundary options and does not include transfer or choiced-in students