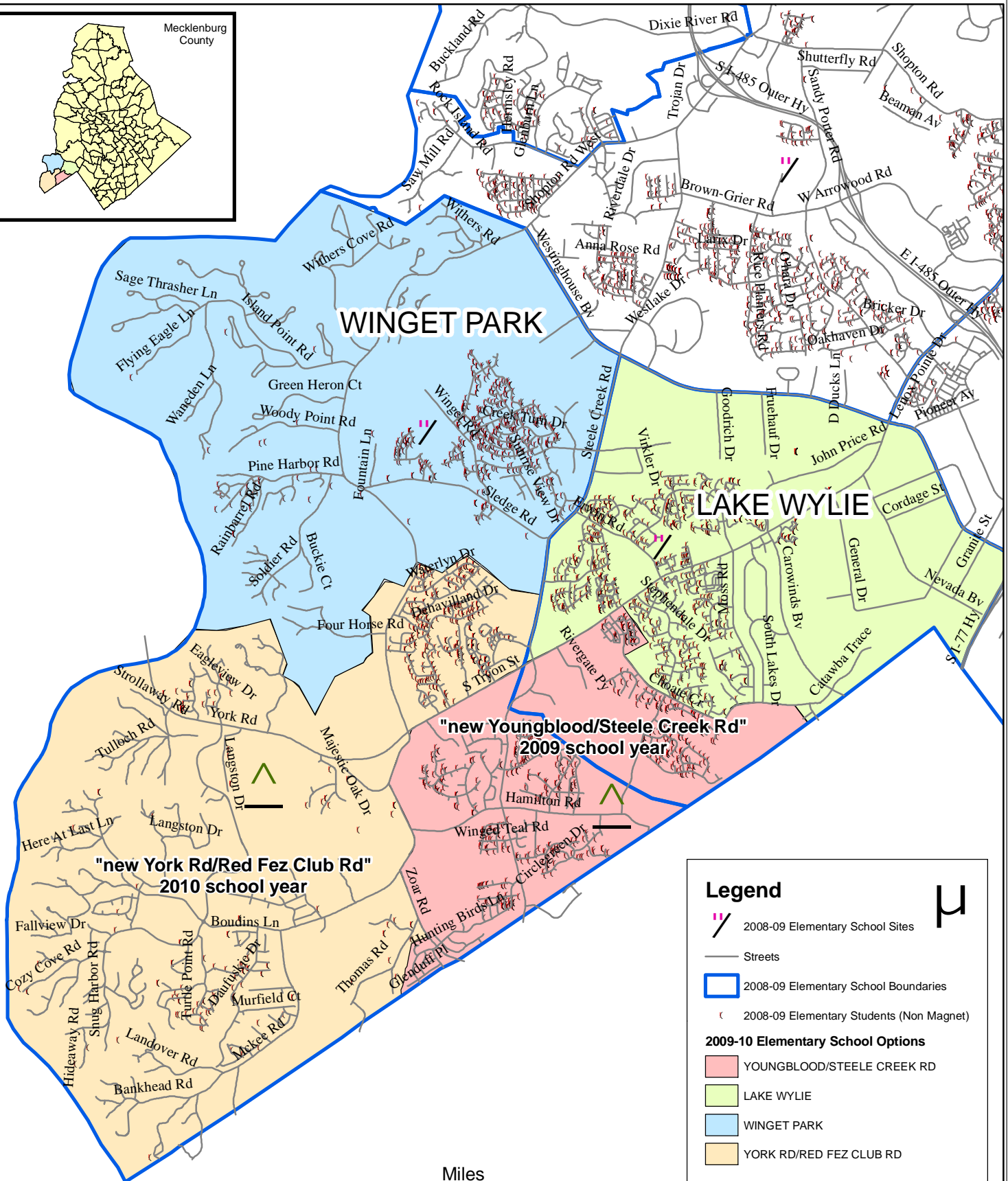
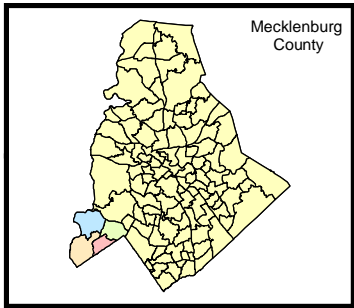


Community Option: 2009-10 and 2010-11 School Year "new Youngblood/Steele Creek Rd" and "new York Rd/Red Fez Club Rd" elementary schools



Legend

- 2008-09 Elementary School Sites
- Streets
- 2008-09 Elementary School Boundaries
- 2008-09 Elementary Students (Non Magnet)

2009-10 Elementary School Options

- YOUNGBLOOD/STEELE CREEK RD
- LAKE WYLIE
- WINGET PARK
- YORK RD/RED FEZ CLUB RD



**Community Option: "new youngblood/stele creek rd" and "new york rd/red fez club rd" elementary schools
2009-10 and 2010-2011 School Year**

CMS Enrollment, 2008-09

Elementary Schools	2008/09 ADM 20th Day	Building Classroom Capacity	Building Utilization without mobiles	Number of Mobiles	Number of EC Classes	White	African American	Latino	Asian	Native American	Multi Racial	Free or Reduced Price Lunch
Lake Wylie	966	693	139%	19	2	40%	29%	19%	5%	1%	6%	39%
Wngnet Park	1188	767	155%	19	2	44%	28%	16%	6%	0%	6%	34%

*enrollment includes transfer and choiced-in students as of 20th day 2008-09

*ADM= Average Daily Membership

Future Growth - CMS Students (non magnet) Within Boundary After Proposed "new youngblood/stele creek rd and york rd/red fez club rd boundary options

Elementary Schools	Number of Students residing in the Proposed 2009-10 School Boundary as of 20th day 2008-09	2009-10				2010-11			
		Number of Students from Growth (2009-10 SY)	Total Students with Growth	Building Classroom Capacity	Building Utilization (without Mobiles)	Number of Students from Growth (2010-11 SY)	Total Students with Growth	Building Classroom Capacity	Utilization (without Mobiles)
"new youngblood"	536	59	595	767	78%	59	654	767	85%
"new york road"	462	131	593	767	77%	131	724	767	94%
Lake Wylie	702	31	733	693	106%	31	764	693	110%
Winget Park	914	185	1099	767	143%	61	574	767	75%

*Assumption: the rate of growth will remain constant from 2008-09 to 2010-11

*Number of students in the proposed boundary options do not include transfer or choiced-in students

*Winget Park receives relief from "new youngblood/stele creek rd" in the 2009-10 SY and relief from "new york rd/red fez club rd" in the 2010-11 SY

Demographic/Student data as of 20th day 2008-09								
Elementary Schools	Number of Students residing in the Proposed 2009-10 School Boundary as of 20th day 2008-09	White	African American	Hispanic	Asian	Native American	Multi Racial	Free or Reduced Price Lunch
"new youngblood"	536	37%	29%	21%	4%	1%	7%	38%
"new york road"	462	45%	26%	18%	5%	0%	6%	36%
Lake Wylie	702	42%	28%	16%	6%	1%	8%	37%
Winget Park 2009-10	914	50%	25%	17%	7%	0%	6%	33%

Winget Park 2010-11	452	46%	24%	16%	8%	0%	6%	30%
---------------------	-----	-----	-----	-----	----	----	----	-----

*Demographic data is based on students residing in the proposed boundary options and does not include transfer or choiced-in students