

Data Dashboard

A convenient online tool to gauge school performance and measure district progress.

Using Data to Evaluate Achievement

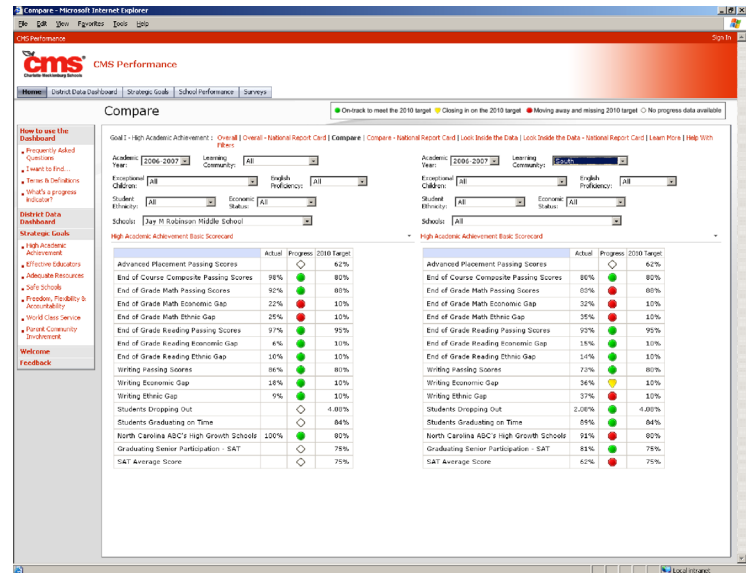
The Data Dashboard is an interactive online tool for for anyone and everyone – including parents, community members and civic leaders – who would like more information about Charlotte-Mecklenburg Schools. It offers in-depth data profiles of the district as a whole, academic achievement and CMS performance in many areas of teaching, learning and school operations.

Transparency and Accessibility

The Charlotte-Mecklenburg Board of Education established Reform Governance Policy AEC in October 2006 so that everyone in the community could see how our schools are performing. The first page of the dashboard is intended to offer an assessment of the district's performance at a glance. It includes easily accessible

The Data Warehousing Institute, a global educational group, has recognized the Data Dashboard with its 2009 Best Practices award for government and nonprofit agencies. The award recognizes excellence in developing and deploying business-intelligence and data-warehousing applications. The Data Dashboard also won a place on Microsoft's current top 10 demonstration sites for business-intelligence solutions.

measures of operations, such as school safety and bus punctuality, as well as measures of district progress toward the goals in the *Strategic Plan 2010: Educating Students to Compete Locally, Nationally and Internationally*. The plan is the district's map for progress through the year 2010 and the Board wanted the public to be able to assess our progress.



Frequently Asked Questions

Q: Why are test results so important and why does CMS rely on them so much?

A: Testing measures how much students are learning. There are other, less objective ways to measure student achievement and CMS uses those as well. But testing is an objective, quantified measure of how well we are teaching and how much our students are learning. Students in CMS take a wide variety of tests required by local, state and federal regulations and those scores help us assess our students' academic growth and our effectiveness in the classroom.

Q: Who is the Data Dashboard's target audience?

A: Anyone can use the dashboard because it is open to the public through our Web site. It can be used by parents to assess a school's performance or how the district is doing in educating a particular group of children. It can be used by teachers and administrators to compare schools' performance or provide in-depth data

Data Dashboard, *continued*

about subgroups of students or the district as a whole. Members of the community at large, whether they have children in the district or not, may also use it to learn about CMS. The dashboard will also enable schools to assess their own progress and identify other schools with similar challenges, so that they can share effective strategies with each other.

Q: Will the Data Dashboard change in coming years?

A: The Data Dashboard will change regularly as new data is incorporated into it. The Board policy calls for it to be updated at least once a year, but we expect to update it more frequently than that. Testing data comes in at various points of the year and it will be added as it arrives.

For the long term, the Data Dashboard is likely to evolve as its use by educators, parents and the public increases. As it is currently configured, it can be used for sophisticated data analysis in many areas and we expect its frequency of use, as well as how it is used, to evolve over time. It has been built with a substantial amount of capacity, not all of which is being used now, so more sophisticated and extended use is possible.

Q: Are there other ways that parents or teachers can use the Data Dashboard?

A: Yes. As our accountability measures become more sophisticated and more extensive, parents and teachers will be able to analyze that data in many ways. Essentially, the Data Dashboard measures accountability across the district by assessing performance on a wide-ranging variety of measures. As we continue to refine and reform our assessment practices, they will in turn

allow new and refined use of the dashboard.

Q: How current is the information in the Data Dashboard?

A: It depends on the specific information you are viewing. End-of-Course and End-of-Grade tests, for example, are given twice each year: once at the end of the first semester (December) and again at the end of the school year. We will update the dashboard with the most recent test results as they become available. End-of-Course and End-of-Grade tests, for example, are state tests which are administered locally. Scoring results must be reviewed and certified by the state Department of Public Education. This usually leads to a delay of weeks or months before the results are released. Other tests, such as the National Assessment of Educational Progress, are given biennially, so results in the dashboard for these can be more than a year old. In most cases, you can see the dates for the data provided on each data page.

Office of Accountability

600 East Fourth Street, Fifth Floor, Charlotte, NC 28202
980-343-6382 (Office)
980-343-6660 (Fax)

CHARLOTTE-MECKLENBURG SCHOOLS

P.O. Box 30035 • Charlotte, NC 28230 • Phone: 908.343.3000 • www.cms.k12.nc.us

In compliance with federal law, Charlotte-Mecklenburg Schools administers all education programs, employment activities and admissions without discrimination against any person on the basis of gender, race, color, religion, national origin, age or disability.

January 2011

REACH FURTHER. **Global competitiveness starts here.**