

Elementary School

A Day of In-person Instruction

Getting ready for school



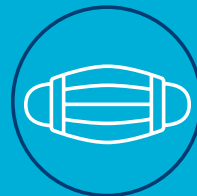
Check for symptoms and stay home if you or someone in your household has symptoms.



If riding the bus, parent/guardian must complete the symptoms screening attestation weekly.



Complete the electronic symptoms screener sent to student's CMS email or access it on your school's home page.



Remember your face covering.

Traveling to school



By bus: Remember to social distance at the bus stop. Wear your face covering when you board the bus. Show the screening form to the bus driver.

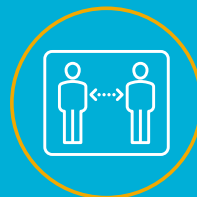


By car: Wear your face covering as the screener approaches the car. Parent/guardian or student show that the electronic screening was completed or answer the screening questions. Allow screener to take your temperature.

Arriving at school



Wear your face covering when you enter the building. Upon entry, everyone will show that they have completed the electronic screening or complete a screening on site. Everyone must get their temperature checked.



Remember to stand 6 feet apart while waiting to be screened or enter the building.

Getting to class



Follow hallway signs and maintain distance. Do not share materials, wash hands and use hand sanitizer frequently and wear face covering.

Eating Lunch



School staff will coordinate lunch schedules that will allow students to eat while socially distanced. Cafeterias and classrooms will be thoroughly cleaned and disinfected between each use.

Leaving School



Remember to wear your face covering and social distance while exiting the building. Continue wearing your face covering on the bus ride home or until pick up.

Remember

If someone has a fever of 100.4 or more, chills, new cough, shortness of breath, new loss of taste or smell they will be taken out of class and need to be picked up.

Students who develop symptoms during the school day will need to be picked up.

Symptoms Screener/form must be completed to enter school and attend class.