

2018-19 SES Data by School

Introduction to *Schools by SES Distribution Data*

Why is the socioeconomic status (SES) make up of a school's student population important?

The Board of Education's goals for student assignment reference equitable access to quality schools and decreasing the number of schools with high concentrations of poor and high needs students.

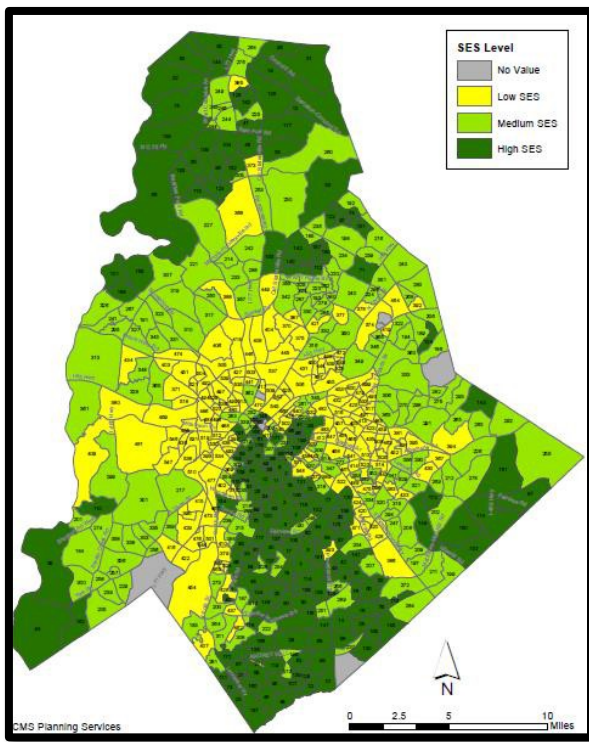
Factors such as family income, parental education attainment and English language ability can, together, influence learning environments. Individual student capacity and potential for learning is *not* correlated to socioeconomic status, but rather there are group effects when large concentrations of students who share similar socioeconomic factors learn together.

How does CMS define SES?

During the fall and winter of 2016, the CMS Board of Education identified a number of social and economic factors that, together, may influence the learning environment. Data associated with the identified factors is readily available from the United States Census (Census) and related American Community Survey (ACS).

The identified factors are:

- English Language Ability (i.e., whether or not English is "spoken" very well in the home)
- Family Composition (i.e, is the home a single or multi-parent home)
- Family Income
- Home Ownership
- Parental Education Attainment



There are 548 block groups, small geographic regions defined by the US Census Bureau, in Mecklenburg County with at least one CMS student resident. CMS assesses each block group relative to the others for each of the 5 identified SES factors. Block groups were then ranked 1 – 548 based on their average score, and divided into 3 equally sized groups.

Blocks 1 – 182 are designated "high SES" and associated with higher incomes and educational attainment, lower incidences of English "not spoken very well" in the home and single parent households, and higher instances of home ownership; these are factors associated with educational advantages.

Blocks 183 – 367 are designated "medium SES" and blocks 368 – 548 are designated "low SES."

It is important to note that these designations are not absolute. That is, CMS did not set an income or education level below which a block group is considered "low SES" and above which it is

considered "medium" or "high SES." Rather, the designations are relative. That is, CMS assessed each block group *relative* to the all the others.

2018-19 SES Data by School

How is SES distribution for a given school calculated?

Each CMS student's home address is geocoded to one of the identified 548 block groups in Mecklenburg County, and each of those block groups has a designation as either high, medium or low SES.

Looking at all the addresses assigned to a given school, and all the block groups associated with those addresses, CMS is able to determine the SES distribution of a school's attending population.

Are there limitations to the SES data?

There are a few limitations to the data. And while the limitations are minor and do not mean the data is not useful for CMS' purposes, it is important to acknowledge them.

The data is specific to the block group medians for each of the factors. It would certainly be more accurate if CMS was able to assess each of the five SES factors for individual student households. Barring the ability to do so, the median data available via the Census and ACS is the best proxy.

The most recent ACS data was released in 2015. And while two years is well within the acceptable range for using the data, it is worth noting that changes in some Mecklenburg County communities may not be reflected in the data.

2018-19 School SES Distribution
(Enrollment data taken November 27, 2018)

School	SES		Medium SES		High SES		Unknown		Total Students	Total %
	Low SES Students	%	Students	%	Students	%	Students	%		
Albemarle Road Elementary	496	56.36%	383	43.52%	1	0.11%		0.00%	880	100.00%
Albemarle Road Middle	763	66.41%	382	33.25%	3	0.26%	1	0.09%	1149	100.00%
Alexander Graham Middle	281	19.73%	196	13.76%	945	66.36%	2	0.14%	1424	100.00%
Allenbrook Elementary	281	98.94%	2	0.70%	1	0.35%		0.00%	284	100.00%
Ardrey Kell High	16	0.48%	140	4.21%	3151	94.82%	16	0.48%	3323	100.00%
Ashley Park PreK-8 School	484	92.72%	34	6.51%	1	0.19%	3	0.57%	522	100.00%
Bailey Middle	125	7.32%	418	24.47%	1162	68.03%	3	0.18%	1708	100.00%
Bain Elementary	7	0.74%	401	42.39%	530	56.03%	8	0.85%	946	100.00%
Ballantyne Elementary	4	0.45%	85	9.52%	795	89.03%	9	1.01%	893	100.00%
Barnette Elementary	19	2.45%	168	21.62%	585	75.29%	5	0.64%	777	100.00%
Barringer Academic Center	288	56.47%	65	12.75%	153	30.00%	4	0.78%	510	100.00%
Berewick Elementary	17	2.00%	568	66.98%	260	30.66%	3	0.35%	848	100.00%
Berryhill School	370	72.55%	139	27.25%		0.00%	1	0.20%	510	100.00%
Beverly Woods Elementary	30	3.63%	158	19.11%	632	76.42%	7	0.85%	827	100.00%
Billingsville Elementary	242	53.42%	50	11.04%	160	35.32%	1	0.22%	453	100.00%
Blythe Elementary	206	20.30%	630	62.07%	175	17.24%	4	0.39%	1015	100.00%
Briarwood Elementary	726	99.59%	3	0.41%		0.00%		0.00%	729	100.00%
Bruns Avenue Elementary	356	87.47%	47	11.55%		0.00%	4	0.98%	407	100.00%
Butler High	378	18.05%	1357	64.80%	347	16.57%	12	0.57%	2094	100.00%
Carmel Middle	407	35.15%	117	10.10%	633	54.66%	1	0.09%	1158	100.00%
Cato Middle College High	60	25.42%	131	55.51%	44	18.64%	1	0.42%	236	100.00%
Chantilly Montessori	75	24.75%	123	40.59%	102	33.66%	3	0.99%	303	100.00%
Charlotte East Language Academy	322	87.74%	40	10.90%	5	1.36%		0.00%	367	100.00%
Charlotte Engineering Early College-UNCC	103	30.12%	158	46.20%	81	23.68%		0.00%	342	100.00%
Charlotte Teacher Early College	33	33.33%	42	42.42%	24	24.24%		0.00%	99	100.00%
Charlotte-Mecklenburg Virtual HS	50	16.72%	113	37.79%	136	45.48%		0.00%	299	100.00%
Clear Creek Elementary	10	1.95%	374	72.76%	128	24.90%	2	0.39%	514	100.00%
Cochrane Collegiate Academy	822	94.70%	44	5.07%	2	0.23%		0.00%	868	100.00%
Collinswood Language Academy	292	36.41%	319	39.78%	189	23.57%	2	0.25%	802	100.00%
Community House Middle	4	0.21%	153	7.98%	1752	91.39%	8	0.42%	1917	100.00%
Cornelius Elementary	130	19.94%	176	26.99%	342	52.45%	4	0.61%	652	100.00%
Cotswold IB Elementary	205	41.25%	66	13.28%	225	45.27%	1	0.20%	497	100.00%
Coulwood STEM Academy	155	21.32%	552	75.93%	17	2.34%	3	0.41%	727	100.00%
Crestdale Middle	155	17.22%	268	29.78%	472	52.44%	5	0.56%	900	100.00%
Croft Community Elementary	15	2.92%	126	24.56%	372	72.51%		0.00%	513	100.00%
Crown Point Elementary	197	34.38%	355	61.95%	21	3.66%		0.00%	573	100.00%
David Cox Road Elementary	33	4.80%	618	89.96%	36	5.24%		0.00%	687	100.00%
Davidson Elementary	1	0.14%	147	21.03%	539	77.11%	12	1.72%	699	100.00%
Devonshire Elementary	613	99.67%	1	0.16%		0.00%	1	0.16%	615	100.00%
Dilworth Elementary School: Latta Campus	89	24.25%	26	7.08%	251	68.39%	1	0.27%	367	100.00%
Dilworth Elementary School: Sedgefield C	72	22.50%	31	9.69%	216	67.50%	1	0.31%	320	100.00%
Druid Hills Academy	408	98.08%	7	1.68%		0.00%	1	0.24%	416	100.00%
East Mecklenburg High	1288	61.74%	428	20.52%	366	17.55%	4	0.19%	2086	100.00%
Eastover Elementary	90	20.32%	97	21.90%	252	56.88%	4	0.90%	443	100.00%
Eastway Middle	816	92.20%	65	7.34%	3	0.34%	1	0.11%	885	100.00%
Elizabeth Lane Elem	3	0.28%	453	41.91%	618	57.17%	7	0.65%	1081	100.00%
Elizabeth Traditional Elem	218	42.91%	222	43.70%	67	13.19%	1	0.20%	508	100.00%
Elon Park Elementary	4	0.36%	8	0.72%	1073	97.19%	19	1.72%	1104	100.00%

2018-19 School SES Distribution
(Enrollment data taken November 27, 2018)

School	SES		Medium SES		High SES		Unknown		Total Students	Total %
	Low SES Students	%	Students	%	Students	%	Students	%		
Endhaven Elementary	67	9.34%	125	17.43%	520	72.52%	5	0.70%	717	100.00%
First Ward Creative Arts Acad	382	59.13%	231	35.76%	33	5.11%		0.00%	646	100.00%
Francis Bradley Middle	125	11.60%	446	41.37%	506	46.94%	1	0.09%	1078	100.00%
Garinger High	1673	94.47%	86	4.86%	9	0.51%	3	0.17%	1771	100.00%
Governors Village STEM Academy (Lower)	568	51.92%	503	45.98%	23	2.10%		0.00%	1094	100.00%
Governors Village STEM Academy (Upper)	389	47.97%	387	47.72%	35	4.32%		0.00%	811	100.00%
Grand Oak Elementary	6	1.03%	25	4.30%	545	93.80%	5	0.86%	581	100.00%
Greenway Park Elementary	458	83.58%	62	11.31%	28	5.11%		0.00%	548	100.00%
Harding University High	1487	91.85%	124	7.66%	8	0.49%		0.00%	1619	100.00%
Harper Middle College High	36	19.15%	89	47.34%	62	32.98%	1	0.53%	188	100.00%
Hawk Ridge Elementary	1	0.11%	93	10.48%	783	88.28%	10	1.13%	887	100.00%
Hawthorne Academy of Health Sciences	127	50.60%	102	40.64%	21	8.37%	1	0.40%	251	100.00%
Hickory Grove Elementary	509	89.93%	57	10.07%		0.00%		0.00%	566	100.00%
Hidden Valley Elementary	875	96.90%	25	2.77%		0.00%	3	0.33%	903	100.00%
Highland Creek Elementary	23	3.80%	246	40.66%	331	54.71%	5	0.83%	605	100.00%
Highland Mill Montessori	61	24.80%	148	60.16%	35	14.23%	2	0.81%	246	100.00%
Highland Renaissance Academy	353	88.03%	45	11.22%	2	0.50%	1	0.25%	401	100.00%
Hopewell High	228	13.17%	901	52.05%	599	34.60%	3	0.17%	1731	100.00%
Hornets Nest Elementary	159	24.80%	481	75.04%	1	0.16%		0.00%	641	100.00%
Huntersville Elementary	188	23.59%	125	15.68%	484	60.73%		0.00%	797	100.00%
Huntingtowne Farms Elementary	611	77.54%	111	14.09%	66	8.38%		0.00%	788	100.00%
Idlewild Elementary	659	67.45%	283	28.97%	33	3.38%	2	0.20%	977	100.00%
Independence High	768	34.07%	1053	46.72%	430	19.08%	3	0.13%	2254	100.00%
Irwin Academic Center	79	21.01%	163	43.35%	131	34.84%	3	0.80%	376	100.00%
J H Gunn Elementary	606	83.36%	118	16.23%		0.00%	3	0.41%	727	100.00%
J M Alexander Middle	166	17.83%	497	53.38%	266	28.57%	2	0.21%	931	100.00%
J T Williams Secondary Montessori	45	21.23%	95	44.81%	71	33.49%	1	0.47%	212	100.00%
J.V. Washam Elementary	9	0.81%	507	45.47%	595	53.36%	4	0.36%	1115	100.00%
James Martin Middle	364	42.33%	470	54.65%	26	3.02%		0.00%	860	100.00%
Jay M Robinson Middle	8	0.65%	61	4.94%	1158	93.69%	9	0.73%	1236	100.00%
Joseph W Grier Academy	260	32.62%	534	67.00%	2	0.25%	1	0.13%	797	100.00%
Kennedy Middle	91	8.60%	784	74.10%	182	17.20%	1	0.09%	1058	100.00%
Lake Wylie Elementary	18	2.82%	616	96.40%	4	0.63%	1	0.16%	639	100.00%
Lansdowne Elementary	278	48.60%	106	18.53%	185	32.34%	3	0.52%	572	100.00%
Lawrence Orr Elementary	677	97.69%	13	1.88%	1	0.14%	2	0.29%	693	100.00%
Lebanon Road Elementary	364	50.42%	312	43.21%	45	6.23%	1	0.14%	722	100.00%
Levine Middle College High	22	9.44%	76	32.62%	134	57.51%	1	0.43%	233	100.00%
Lincoln Heights Academy	51	59.30%	31	36.05%	3	3.49%	1	1.16%	86	100.00%
Long Creek Elementary	38	7.45%	460	90.20%	9	1.76%	3	0.59%	510	100.00%
Mallard Creek Elementary	47	7.68%	407	66.50%	157	25.65%	1	0.16%	612	100.00%
Mallard Creek High	46	1.89%	1626	66.64%	759	31.11%	9	0.37%	2440	100.00%
Marie G Davis	449	79.47%	110	19.47%	5	0.88%	1	0.18%	565	100.00%
Martin Luther King Jr Middle	769	81.38%	175	18.52%		0.00%	1	0.11%	945	100.00%
Matthews Elementary	205	19.90%	399	38.74%	416	40.39%	10	0.97%	1030	100.00%
McAlpine Elementary	21	4.03%	191	36.66%	306	58.73%	3	0.58%	521	100.00%
McClintock Middle	798	68.97%	215	18.58%	144	12.45%		0.00%	1157	100.00%
McKee Road Elementary	7	1.26%	68	12.21%	475	85.28%	7	1.26%	557	100.00%
Merancas Middle College High	15	8.62%	77	44.25%	81	46.55%	1	0.57%	174	100.00%

2018-19 School SES Distribution
(Enrollment data taken November 27, 2018)

School	SES		Medium SES		High SES		Unknown		Total Students	Total %
	Low SES Students	%	Students	%	Students	%	Students	%		
Merry Oaks International Academy	489	93.50%	33	6.31%	1	0.19%		0.00%	523	100.00%
Metro School	107	47.35%	91	40.27%	27	11.95%	1	0.44%	226	100.00%
Military and Global Leadership Academy	113	58.85%	69	35.94%	10	5.21%		0.00%	192	100.00%
Mint Hill Middle	173	14.02%	767	62.16%	288	23.34%	6	0.49%	1234	100.00%
Montclair Elementary	395	89.98%	44	10.02%		0.00%		0.00%	439	100.00%
Mountain Island Lake Academy	16	2.04%	512	65.14%	258	32.82%		0.00%	786	100.00%
Myers Park High	678	19.89%	450	13.20%	2277	66.81%	3	0.09%	3408	100.00%
Myers Park Traditional	251	38.26%	225	34.30%	180	27.44%		0.00%	656	100.00%
Nations Ford Elementary	783	98.86%	6	0.76%	1	0.13%	2	0.25%	792	100.00%
Newell Elementary	287	36.47%	490	62.26%	5	0.64%	5	0.64%	787	100.00%
North Mecklenburg High	803	36.19%	966	43.53%	450	20.28%		0.00%	2219	100.00%
Northeast Middle	188	30.03%	371	59.27%	66	10.54%	1	0.16%	626	100.00%
Northridge Middle	200	22.22%	694	77.11%	6	0.67%		0.00%	900	100.00%
Northwest School of the Arts	335	30.34%	489	44.29%	279	25.27%	1	0.09%	1104	100.00%
Oakdale Elementary	293	48.27%	313	51.57%	1	0.16%		0.00%	607	100.00%
Oakhurst STEAM Academy	376	57.49%	243	37.16%	33	5.05%	2	0.31%	654	100.00%
Oaklawn Language Academy	268	46.05%	271	46.56%	43	7.39%		0.00%	582	100.00%
Olde Providence Elementary	10	1.34%	47	6.30%	688	92.23%	1	0.13%	746	100.00%
Olympic High	92	3.49%	2111	80.14%	427	16.21%	4	0.15%	2634	100.00%
Palisades Park Elementary		0.00%	440	57.14%	328	42.60%	2	0.26%	770	100.00%
Park Road Montessori	67	15.09%	115	25.90%	260	58.56%	2	0.45%	444	100.00%
Parkside Elementary	3	0.87%	176	51.16%	165	47.97%		0.00%	344	100.00%
Paw Creek Elementary	79	12.31%	552	85.98%	7	1.09%	4	0.62%	642	100.00%
Performance Learning Center	95	62.91%	49	32.45%	7	4.64%		0.00%	151	100.00%
Phillip O Berry Academy of Technology	785	46.15%	814	47.85%	98	5.76%	4	0.24%	1701	100.00%
Piedmont IB Middle	340	31.45%	457	42.28%	283	26.18%	1	0.09%	1081	100.00%
Pineville Elementary	310	40.10%	421	54.46%	41	5.30%	1	0.13%	773	100.00%
Pinewood Elementary	352	78.57%	70	15.63%	26	5.80%		0.00%	448	100.00%
Piney Grove Elementary	250	31.93%	533	68.07%		0.00%		0.00%	783	100.00%
Polo Ridge Elementary		0.00%	2	0.20%	974	97.99%	18	1.81%	994	100.00%
Providence High	9	0.46%	482	24.69%	1453	74.44%	8	0.41%	1952	100.00%
Providence Spring Elementary		0.00%	2	0.20%	976	99.29%	5	0.51%	983	100.00%
Quail Hollow Middle	589	51.40%	446	38.92%	111	9.69%		0.00%	1146	100.00%
Rama Road Elementary	376	69.76%	25	4.64%	137	25.42%	1	0.19%	539	100.00%
Randolph Middle	429	36.45%	384	32.63%	363	30.84%	1	0.08%	1177	100.00%
Ranson Middle	700	62.50%	416	37.14%	1	0.09%	3	0.27%	1120	100.00%
Reedy Creek Elementary	27	3.42%	752	95.31%	7	0.89%	3	0.38%	789	100.00%
Reid Park Academy	414	98.57%	5	1.19%		0.00%	1	0.24%	420	100.00%
Renaissance West STEAM Academy	552	97.53%	12	2.12%	2	0.35%		0.00%	566	100.00%
Ridge Road Middle	36	2.79%	863	66.90%	388	30.08%	3	0.23%	1290	100.00%
River Gate Elementary	7	0.89%	572	72.87%	205	26.11%	1	0.13%	785	100.00%
River Oaks Academy	23	4.22%	493	90.46%	25	4.59%	4	0.73%	545	100.00%
Rocky River High	445	30.29%	954	64.94%	68	4.63%	2	0.14%	1469	100.00%
Sedgefield Middle	460	86.30%	55	10.32%	17	3.19%	1	0.19%	533	100.00%
Selwyn Elementary	67	8.29%	128	15.84%	609	75.37%	4	0.50%	808	100.00%
Shamrock Gardens Elementary	312	64.07%	56	11.50%	119	24.44%		0.00%	487	100.00%
Sharon Elementary	4	0.44%	158	17.52%	739	81.93%	1	0.11%	902	100.00%
Smithfield Elementary	178	28.03%	308	48.50%	148	23.31%	1	0.16%	635	100.00%

2018-19 School SES Distribution
(Enrollment data taken November 27, 2018)

School	SES		Medium SES		High SES		Unknown		Total Students	Total %
	Low SES Students	%	Students	%	Students	%	Students	%		
South Charlotte Middle	25	2.55%	405	41.28%	548	55.86%	3	0.31%	981	100.00%
South Mecklenburg High	1137	36.48%	1170	37.54%	809	25.95%	1	0.03%	3117	100.00%
Southwest Middle School	346	24.11%	898	62.58%	189	13.17%	2	0.14%	1435	100.00%
Starmount Acad of Excellence	438	96.48%	14	3.08%		0.00%	2	0.44%	454	100.00%
Statesville Road Elementary	533	91.11%	50	8.55%	2	0.34%		0.00%	585	100.00%
Steele Creek Elementary	104	14.61%	606	85.11%		0.00%	2	0.28%	712	100.00%
Sterling Elementary	509	80.41%	123	19.43%		0.00%	1	0.16%	633	100.00%
Stoney Creek Elementary	169	22.75%	570	76.72%	1	0.13%	3	0.40%	743	100.00%
Thomasboro Academy	582	96.84%	16	2.66%		0.00%	3	0.50%	601	100.00%
Torrence Creek Elementary	160	20.70%	141	18.24%	468	60.54%	4	0.52%	773	100.00%
Trillium Springs Montessori	13	8.44%	82	53.25%	58	37.66%	1	0.65%	154	100.00%
Tuckaseegee Elementary	396	58.75%	276	40.95%	1	0.15%	1	0.15%	674	100.00%
Turning Point Academy	137	62.56%	63	28.77%	16	7.31%	3	1.37%	219	100.00%
University Meadows Elementary	151	23.78%	429	67.56%	55	8.66%		0.00%	635	100.00%
University Park Creative Arts	317	72.87%	110	25.29%	8	1.84%		0.00%	435	100.00%
Vance High	1006	51.20%	913	46.46%	42	2.14%	4	0.20%	1965	100.00%
Vaughan Academy of Technology	144	34.04%	250	59.10%	29	6.86%		0.00%	423	100.00%
Villa Heights Elementary	73	76.04%	23	23.96%		0.00%		0.00%	96	100.00%
Waddell Language Academy	305	22.10%	546	39.57%	526	38.12%	3	0.22%	1380	100.00%
Walter G Byers School	277	86.02%	34	10.56%	11	3.42%		0.00%	322	100.00%
West Charlotte High	1184	87.44%	166	12.26%	3	0.22%	1	0.07%	1354	100.00%
West Mecklenburg High	413	31.77%	874	67.23%	12	0.92%	1	0.08%	1300	100.00%
Westerly Hills Academy	505	99.21%	2	0.39%	1	0.20%	1	0.20%	509	100.00%
Whitewater Academy	334	43.04%	441	56.83%		0.00%	1	0.13%	776	100.00%
Whitewater Middle	425	56.67%	320	42.67%	5	0.67%		0.00%	750	100.00%
William Amos Hough High	174	6.81%	600	23.48%	1779	69.63%	2	0.08%	2555	100.00%
Wilson STEM Academy	464	95.67%	20	4.12%	1	0.21%		0.00%	485	100.00%
Winding Springs Elementary	518	66.93%	248	32.04%	6	0.78%	2	0.26%	774	100.00%
Windsor Park Elementary	590	98.33%	8	1.33%	1	0.17%	1	0.17%	600	100.00%
Winget Park Elementary	53	7.91%	523	78.06%	90	13.43%	4	0.60%	670	100.00%
Winterfield Elementary	613	97.92%	11	1.76%		0.00%	2	0.32%	626	100.00%
Grand Total	51806	34.94%	52209	35.21%	43834	29.56%	424	0.29%	148273	100.00%