

Bain / Lebanon Road / Piney Grove Relief School

Community Session #2 – Breakout Rooms

Scenario Red

Assigns to Crown Point

Piney Grove ES: section that continues to Mint Hill MS

Lebanon Road ES: apartments off Margaret Wallace Rd.

Assigns to New Relief ES

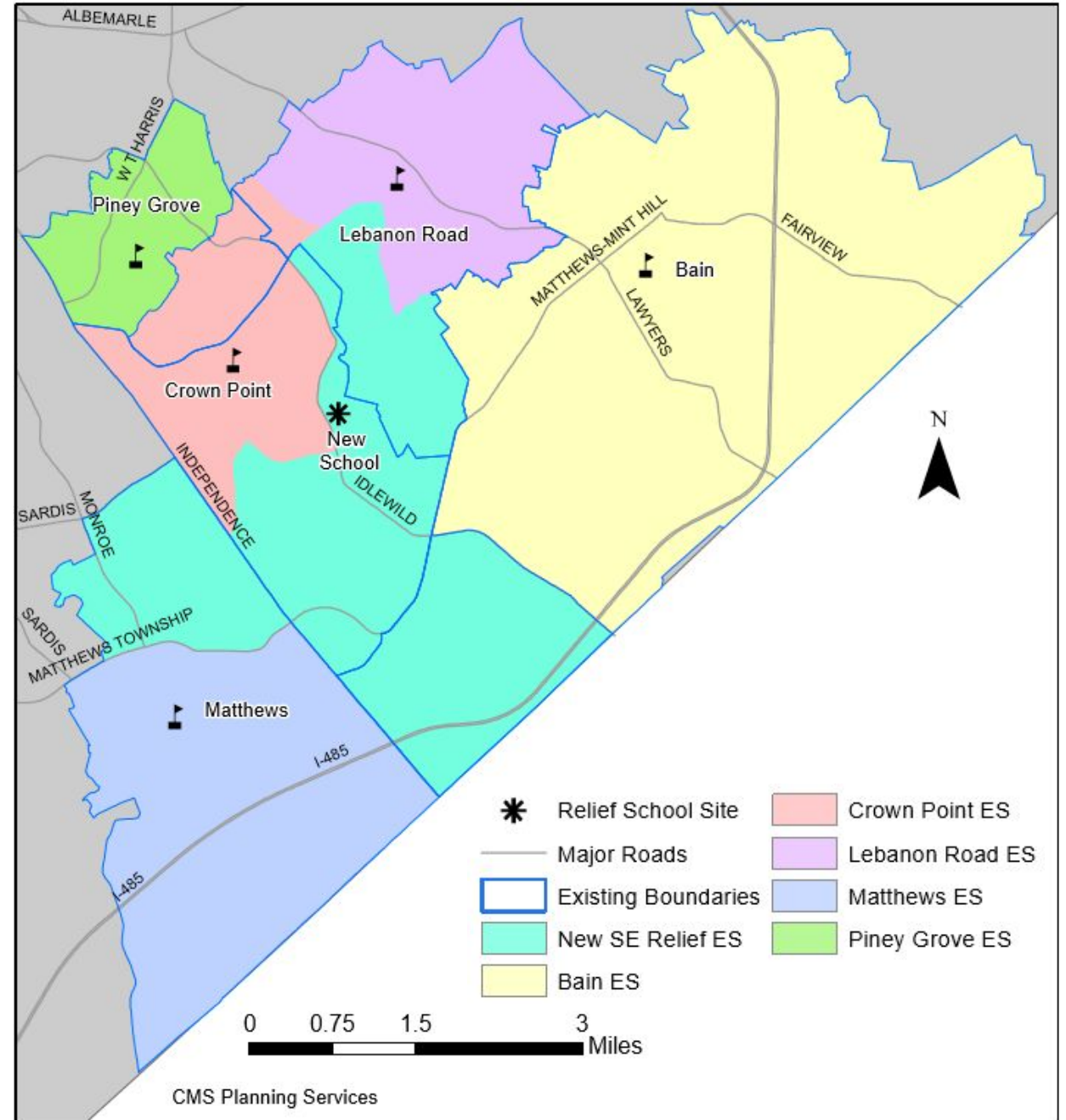
Lebanon Road ES: south of Margaret Wallace Rd. & west of Lebanon Rd. and south of Irvins Creek (Pine Lake CC)

Crown Point ES: south of Sam Newell Rd. and Irvins Creek & east of Idlewild Rd.

Bain ES: section that attends Butler HS

Matthews ES: south of Sardis Road and north of Hwy 51

School	Planning Capacity (@ 20 students/ CR)	Projected enrollment at opening	Opening Projected planning capacity utilization
Bain	1,180	758	64%
Lebanon Road*	720 (540)	520	72% (96%)
Piney Grove*	760 (570)	461	61% (81%)
Crown Point	740	707	96%
Matthews	800	777	97%
New Relief ES	900	752	84%



* Calculated at 15 students per classroom given resources which allow this school to create, on average, smaller class sizes

Scenario Yellow

Assigns to Crown Point

Piney Grove ES: west of Rugged Stone Way (including Longspur Dr. and west)

Matthews ES: south of Sardis Road and north of Hwy 51

Assigns to New Relief ES

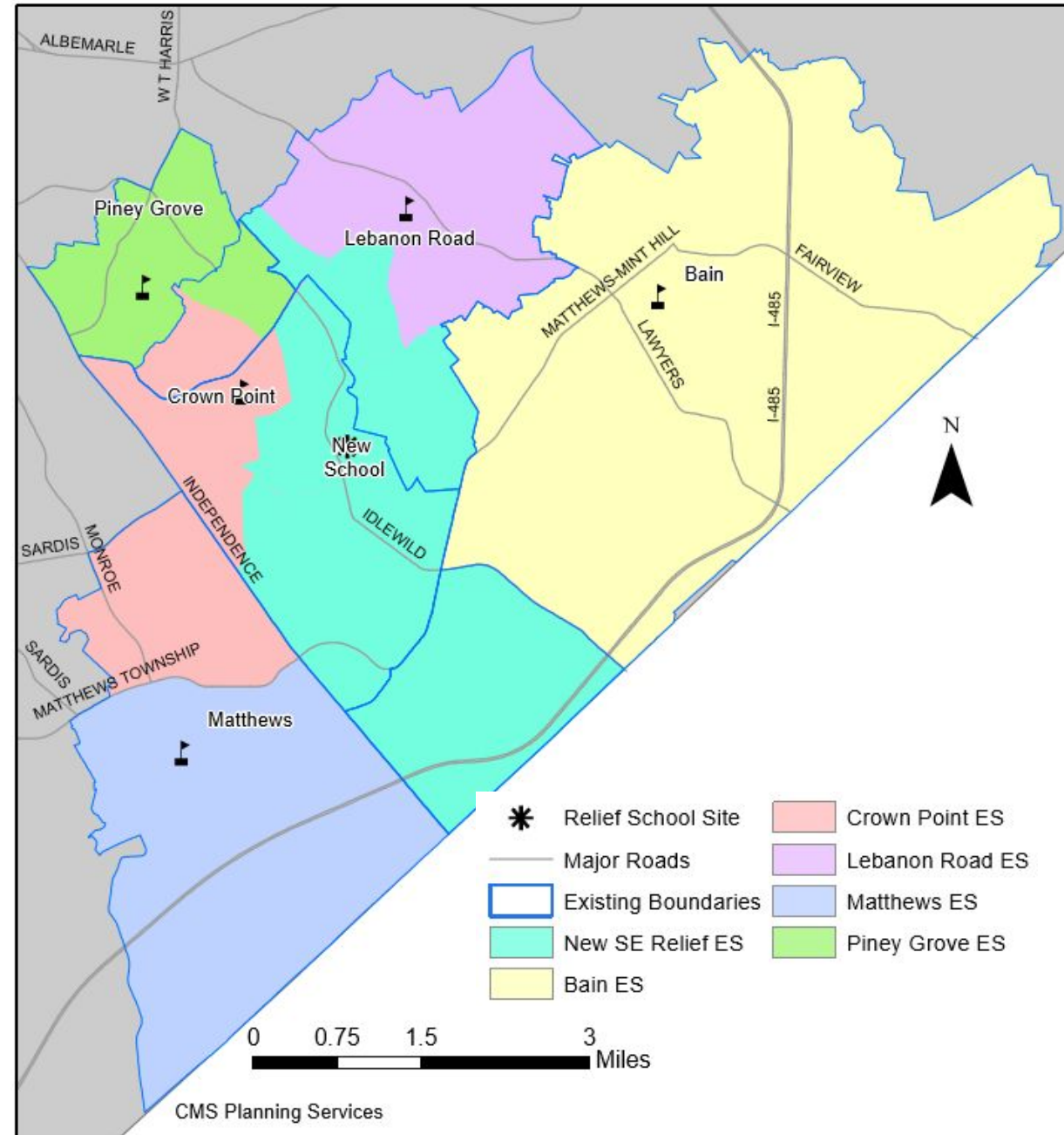
Lebanon Road ES: apartments off Margaret Wallace Rd. & south of Margaret Wallace Rd. & west of Lebanon Rd. and south of Irvins Creek (Pine Lake Country Club and south)

Crown Point ES: south of Sam Newell Rd. and Irvins Creek & east of Treeside Lane

Bain ES: section that attends Butler HS

School	Planning Capacity (@ 20 students/ CR)	Projected enrollment at opening	Opening Projected planning capacity utilization
Bain	1,180	758	64%
Lebanon Road*	720 (540)	520	72% (96%)
Piney Grove*	760 (570)	607	80% (106%)
Crown Point	740	665	90%
Matthews	800	777	97%
New Relief ES	900	648	72%

* Calculated at 15 students per classroom given resources which allow this school to create, on average, smaller class sizes



Scenario Pink

Assigns to Crown Point

Piney Grove ES: section that continues to Mint Hill MS

Assigns to New Relief ES

Lebanon Road ES: apartments off Margaret Wallace Rd. & south of Irvins Creek (Pine Lake Country Club and south)

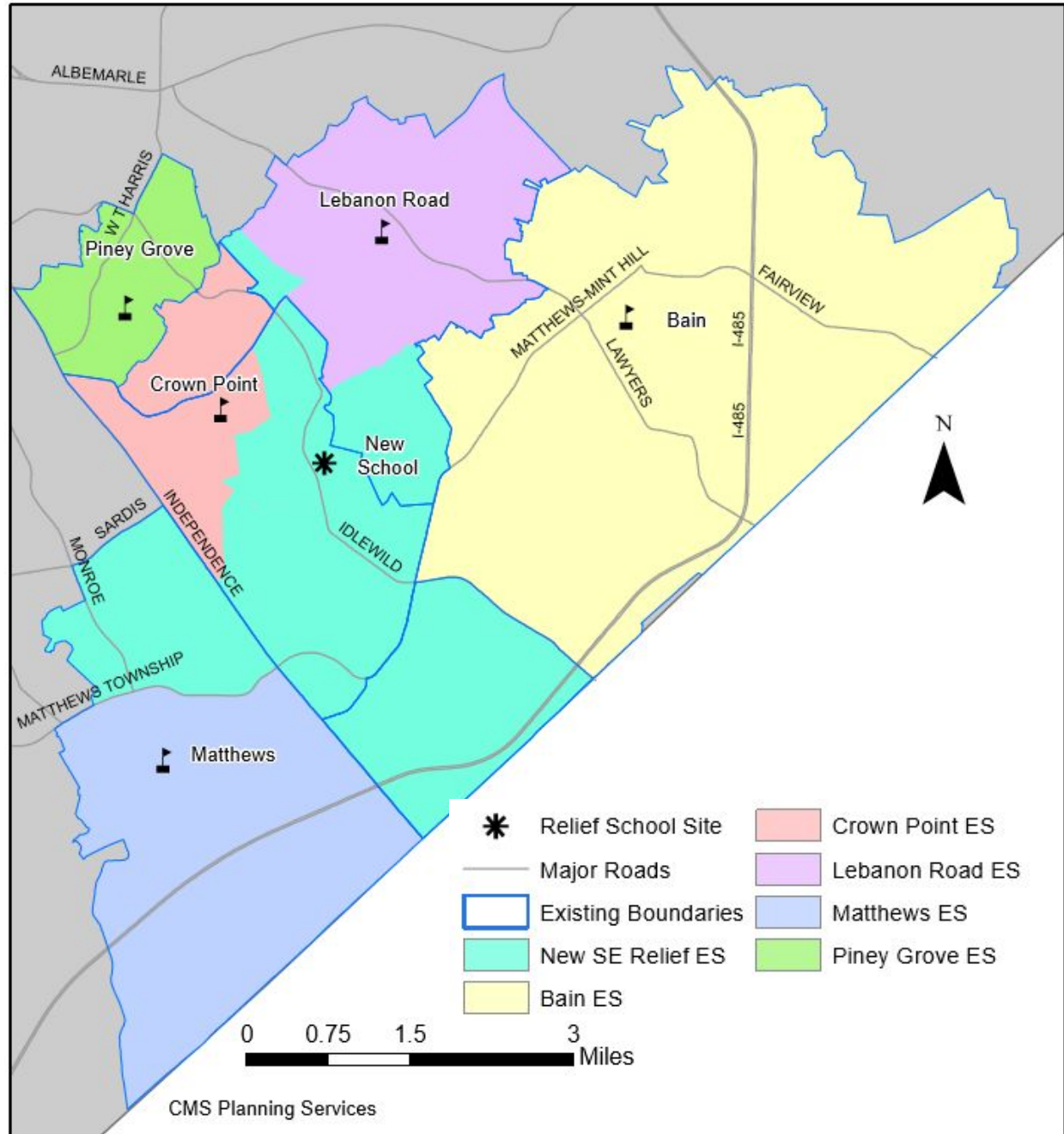
Crown Point ES: south of Sam Newell Rd. and Irvins Creek & east of Treeside Lane

Bain ES: section that attends Butler HS

Mathews ES: south of Sardis Road and north of Hwy 51

School	Planning Capacity (@ 20 students/ CR)	Projected enrollment at opening	Opening Projected planning capacity utilization
Bain	1,180	758	64%
Lebanon Road*	720 (540)	553	77% (102%)
Piney Grove*	760 (570)	461	61% (81%)
Crown Point	740	625	84%
Mathews	800	777	97%
New Relief ES	900	801	89%

* Calculated at 15 students per classroom given resources which allow this school to create, on average, smaller class sizes



Scenario Comparison – Utilization

	Enrollment Utilization			
	2019-20 SY	Red Scenario	Yellow Scenario	Pink Scenario
Bain	925 83%	758 64%	758 64%	758 64%
Lebanon Road*	712 122%	520 72% (96%)	520 72% (96%)	553 77% (102%)
Piney Grove*	696 129%	461 61% (81%)	607 80% (106%)	461 61% (81%)
Crown Point	559 82%	707 96%	665 90%	625 84%
Matthews	967 131%	777 97%	777 97%	777 97%
New Elementary	N/A	752 84%	648 72%	801 89%

* Utilization in parenthesis is calculated at 15 students per classroom given resources which allow this school to create, on average, smaller class sizes

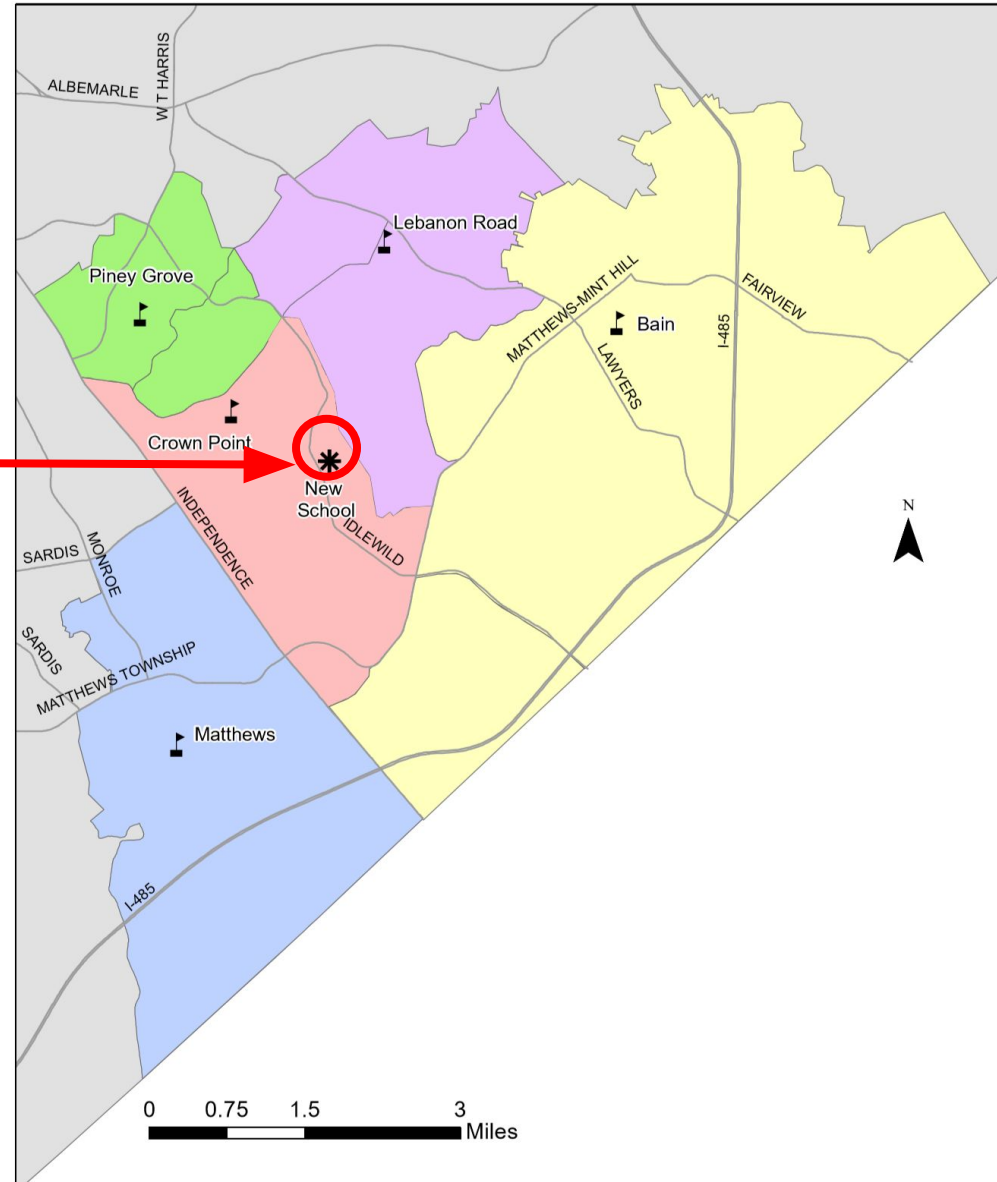
Scenario Comparison – Board Priorities

	Red	Yellow	Pink
Intact Feeder	(+) eliminates MS split at Piney Grove and HS split at Bain; (-) creates split at Lebanon Road and Matthews	(+) reduces MS split at Piney Grove and eliminates HS split at Bain; (-) creates split at Lebanon Road and Matthews	(+) eliminates MS split at Piney Grove and HS split at Bain; (-) creates split at Lebanon Road and Matthews
Proximity (to ES)	(+) decreases home to school distance or keeps it about the same for most students (-) increases for Matthews ES students	(+) decreases home to school distance or keeps it about the same for most students (-) increases for Matthews ES students	(+) decreases home to school distance or keeps it about the same for most students (-) increases for Matthews ES students
SES Diversity	(-) decreases SES diversity; (+) Lebanon Road ES	(-) decreases SES diversity; (+) Lebanon Road ES	(-) decreases SES diversity; (+) Lebanon Road ES
Utilization	(+) improves at all schools except Crown Point	(+) improves at all schools except Crown Point	(+) improves at all schools except Crown Point which stays about the same

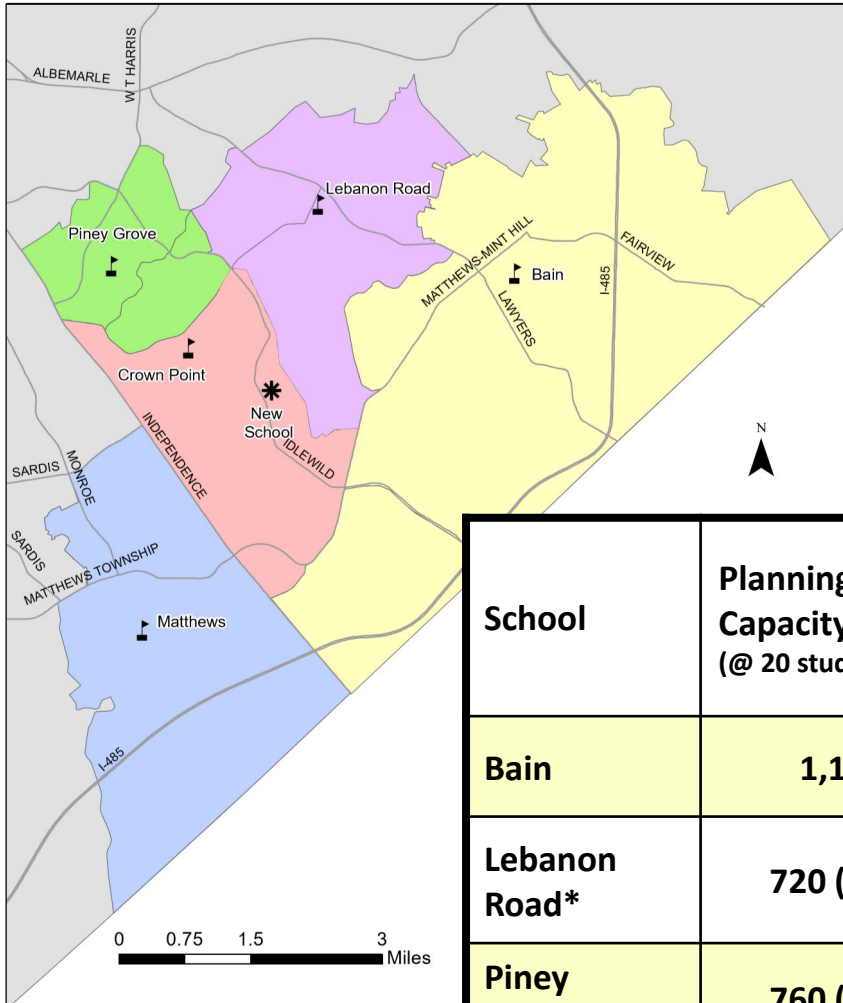
Appendix

Bain / Lebanon Road / Piney Grove Elementary Relief

- New 45 classroom elementary school located at 11615 Idlewild Road in Matthews (on existing Mint Hill Middle School campus)
- New site is physically located in the Crown Point Elementary school boundary.
- Creates an opportunity to relieve Matthews elementary school; 121% classroom utilization
- Current Middle Schools: Crestdale, Mint Hill, Northeast
- Current High Schools: Independence, Butler



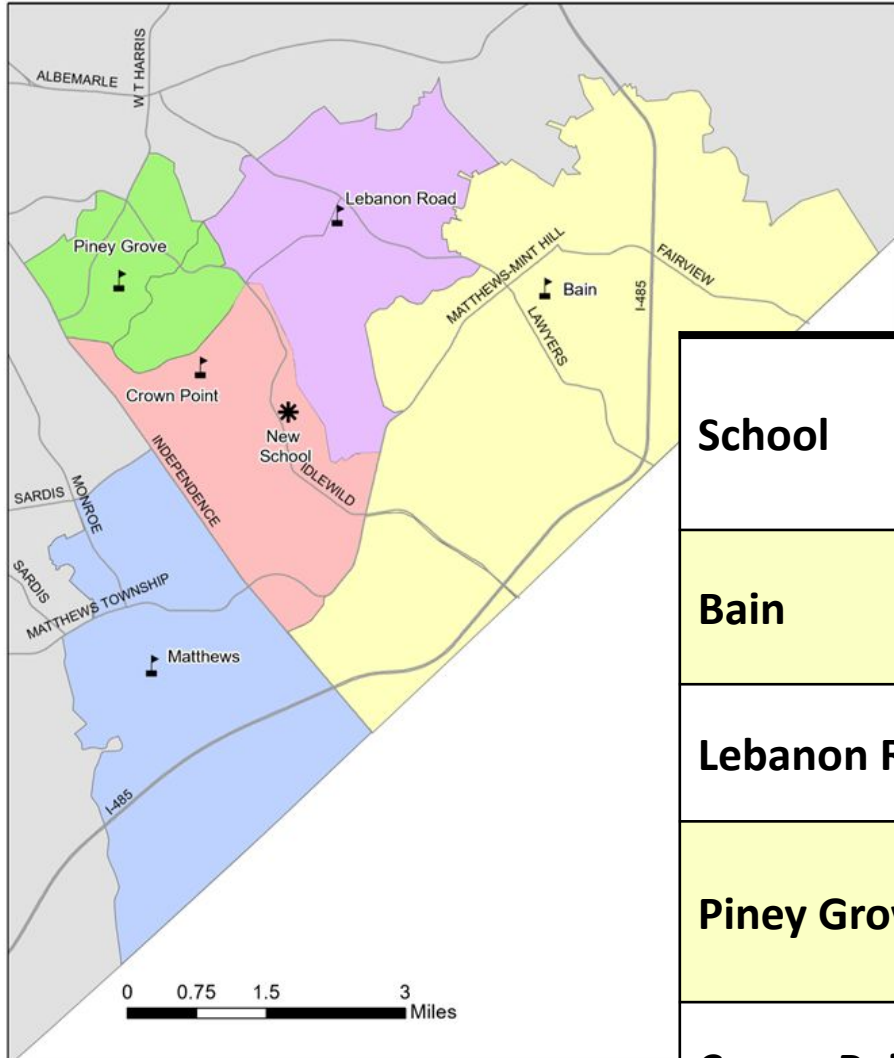
Bain / Lebanon Road / Piney Grove Elementary Relief



* Title 1 school

School	Planning Capacity (@ 20 students/ CR)	Number of Classrooms (CR)	Number of Mobile Units	2019-20 Enrollment	2019-20 Number Classroom Teachers	2019-20 Capacity Utilization (w/o mobiles)	2029-30 Projected Enrollment
Bain	1,180	59	0	925	49	83%	1,002
Lebanon Road*	720 (540)	36	14	712	44	122%	805
Piney Grove*	760 (570)	38	20	696	49	129%	839
Crown Point	740	37	2	559	30.5	82%	506
Matthews	800	40	12	967	52.5	131%	1,002

Bain / Lebanon Road / Piney Grove Elementary Relief



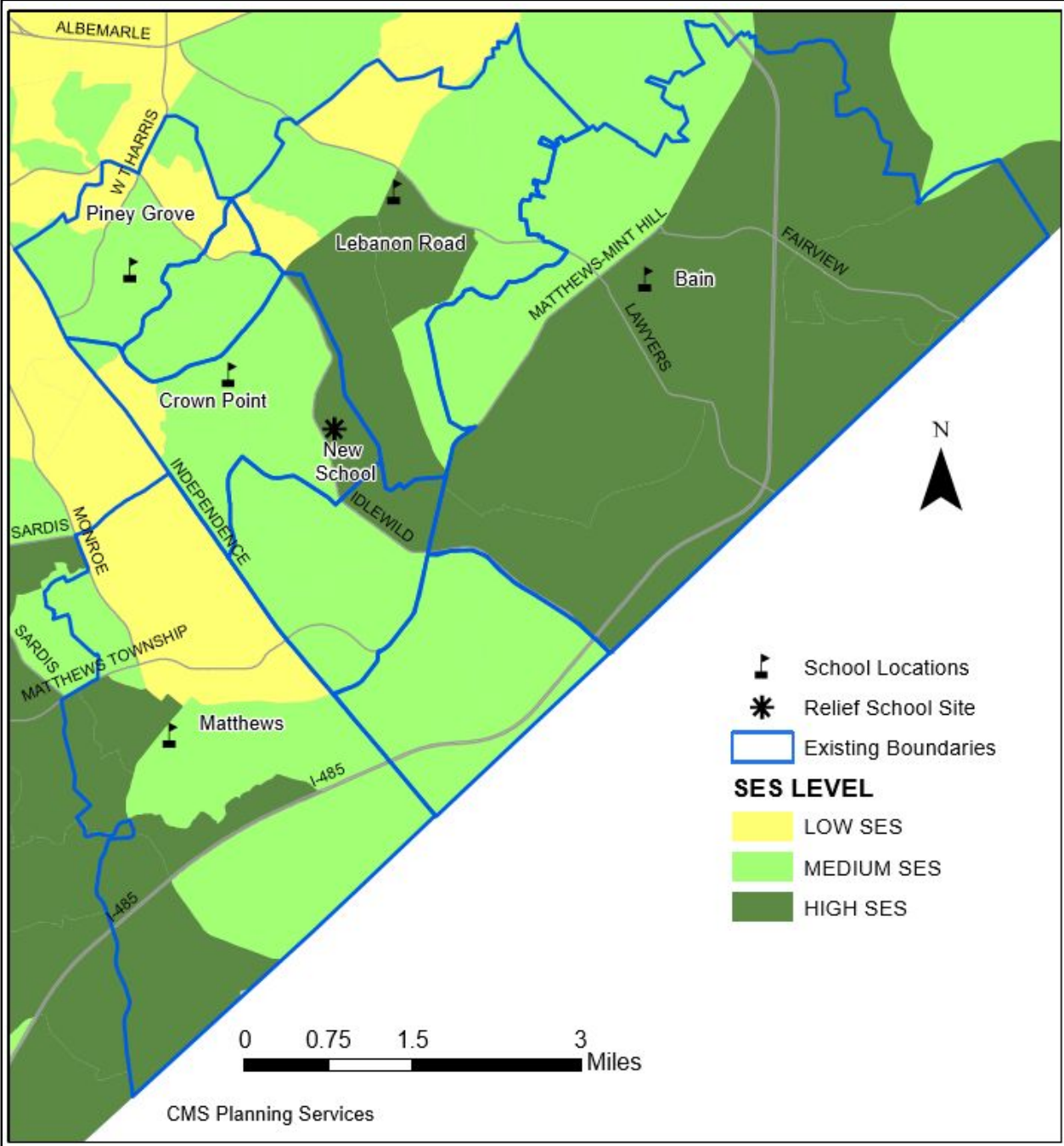
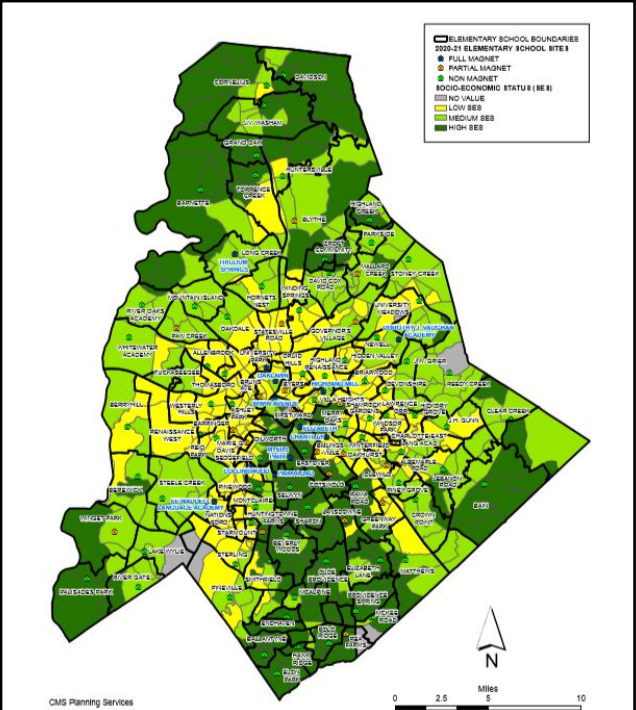
School	Feeder pattern ES	Feeder pattern MS	Feeder pattern HS
Bain	BAIN (North of Idlewild Rd)	Mint Hill	Independence
	BAIN (South of Idlewild Rd)		Butler
Lebanon Road	no split	Northeast	Independence
Piney Grove	PINEY GROVE (North of McAlpine Creek)	Albemarle Rd	Butler
	PINEY GROVE (South of McAlpine Creek)	Mint Hill	
Crown Point	no split	Mint Hill	Butler
Matthews	no split	Crestdale	Butler

Survey Feedback – Input on New Attendance Areas (Q3-5)

- Some feedback regarding specific neighborhoods and where students from those neighborhoods should attend
- References to highway 51, Sardis Road North, and Monroe Road as major thoroughfares along which to draw new boundaries
- Requests to consider the lack of connecting streets between Sam Newell Road, Idlewild Road, Lebanon Road
- Acknowledgement of the multiple split feeds to middle and high school among this group of elementary schools
- Suggest balancing type of housing (e.g., single family, multifamily, etc.) within boundaries to increase diversity

SES Distribution

Existing patterns of SES diversity in Mecklenburg County are shown in the map below. To the right is a map of the SES patterns in the southeast part of the county with the blue lines representing current 2020-21 elementary school boundaries.



Student Density

The student density map represents the number of students in grades K-5 who reside within the attendance area of and attend one of the five elementary schools.

Areas which are white are likely undeveloped or commercial areas in which no students resides.

Areas shaded in blue contain at least one elementary grade student per square mile. The darker the blue shading, the more densely populated is the area.

